

A. Soruları örnekteki gibi cevaplayalım.



A: What is "scientist" in Turkish?
B: Bilim insanı.



A: What is "fırça" in English?
B:



A: What is "karıştırmak" in English?
B:



A: What is "experiment" in Turkish?
B:

B. Olumsuz emir cümlelerini görsellerle eşleştirelim.

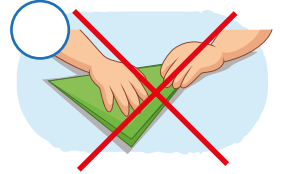
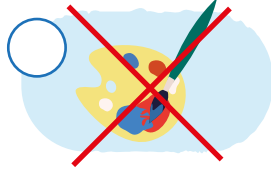
1 - Don't water the flowers

2 - Don't cut the paper.

3 - Don't fold the paper.

4 - Don't mix the colours.

5 - Don't shake the bottle.



C. Görsele bakalım ve soru cevaplayalım.

1. Where is the jar?

2. Where is the brush?

3. Where are the goggles?

4. Where is the magnifier?

5. Where is the box?

6. Where is the plant?

